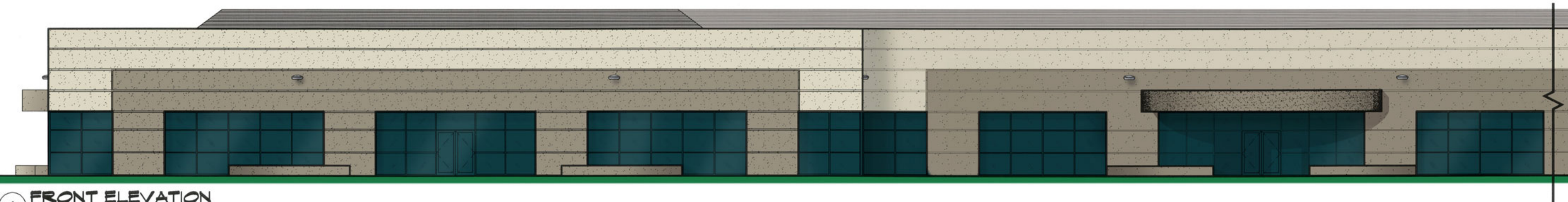
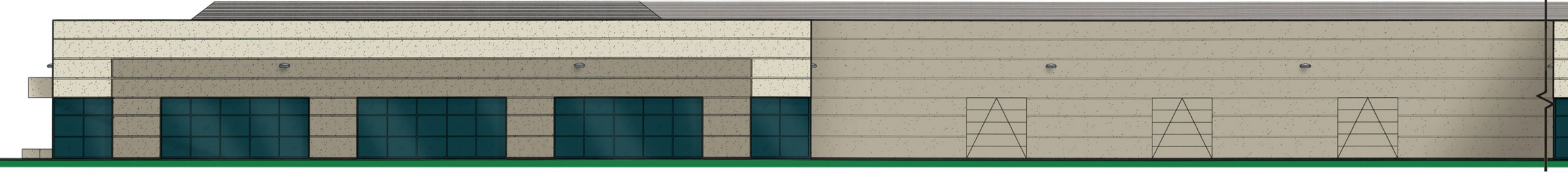
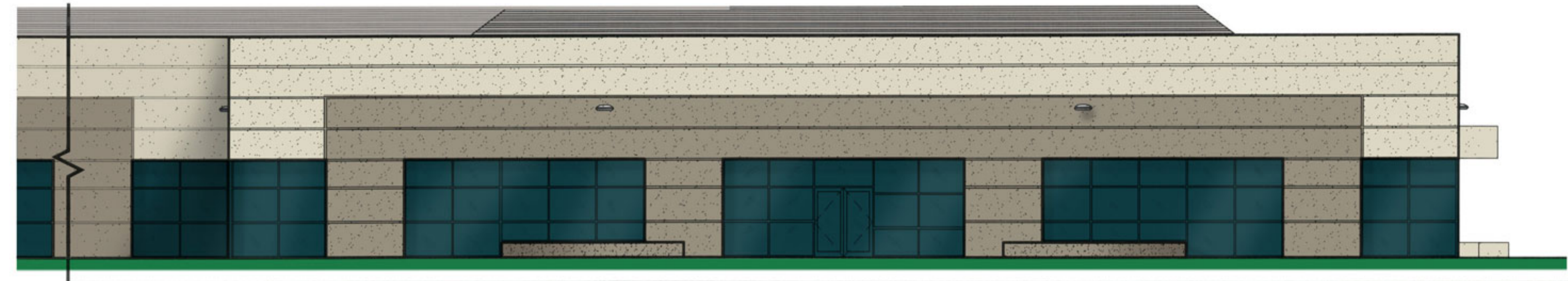


Mountain West Business Center Site Development Plan

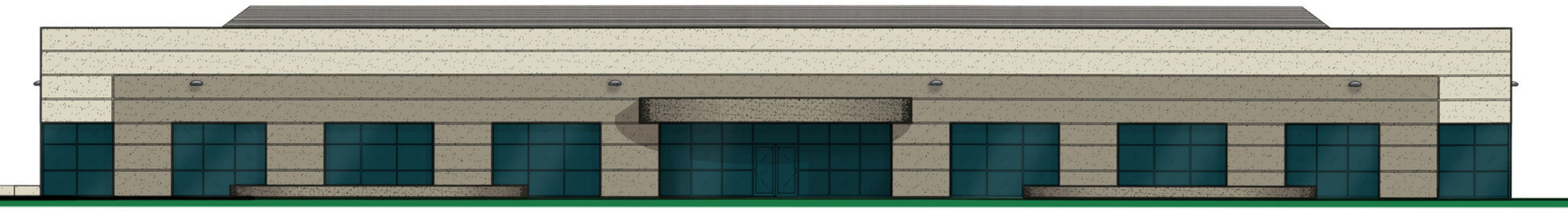
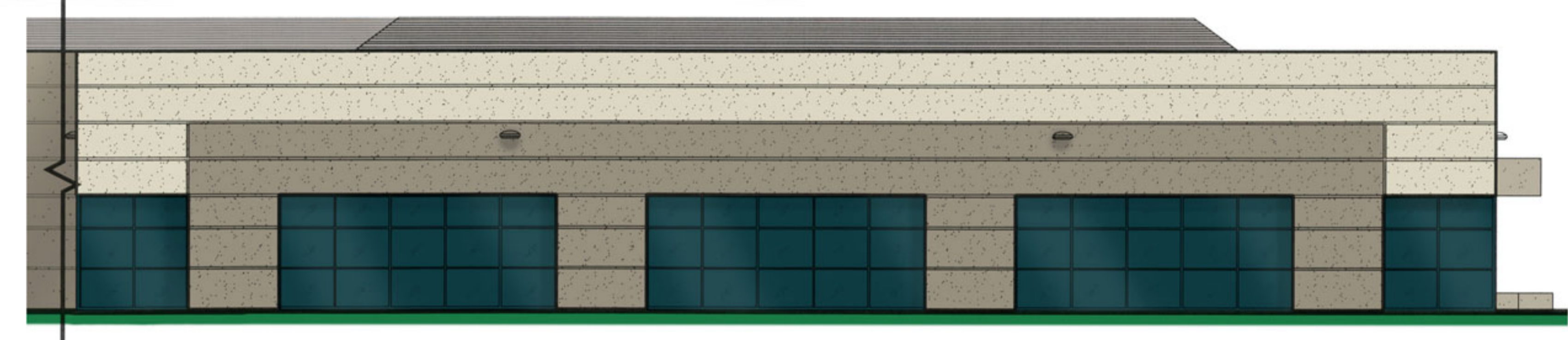
A Parcel of Land Located in the Northeast 1/4 of Section 18, Township 5 South, Range 69 West of the 6th Principal Meridian,
County of Jefferson, State of Colorado



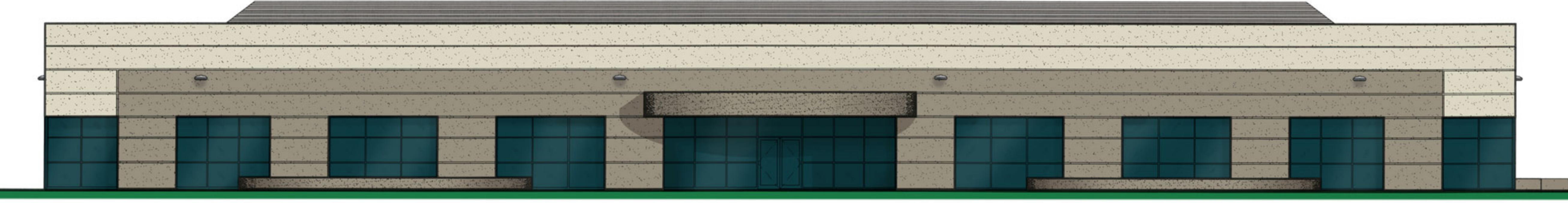
1 FRONT ELEVATION
SCALE: 3/32" = 1'-0"



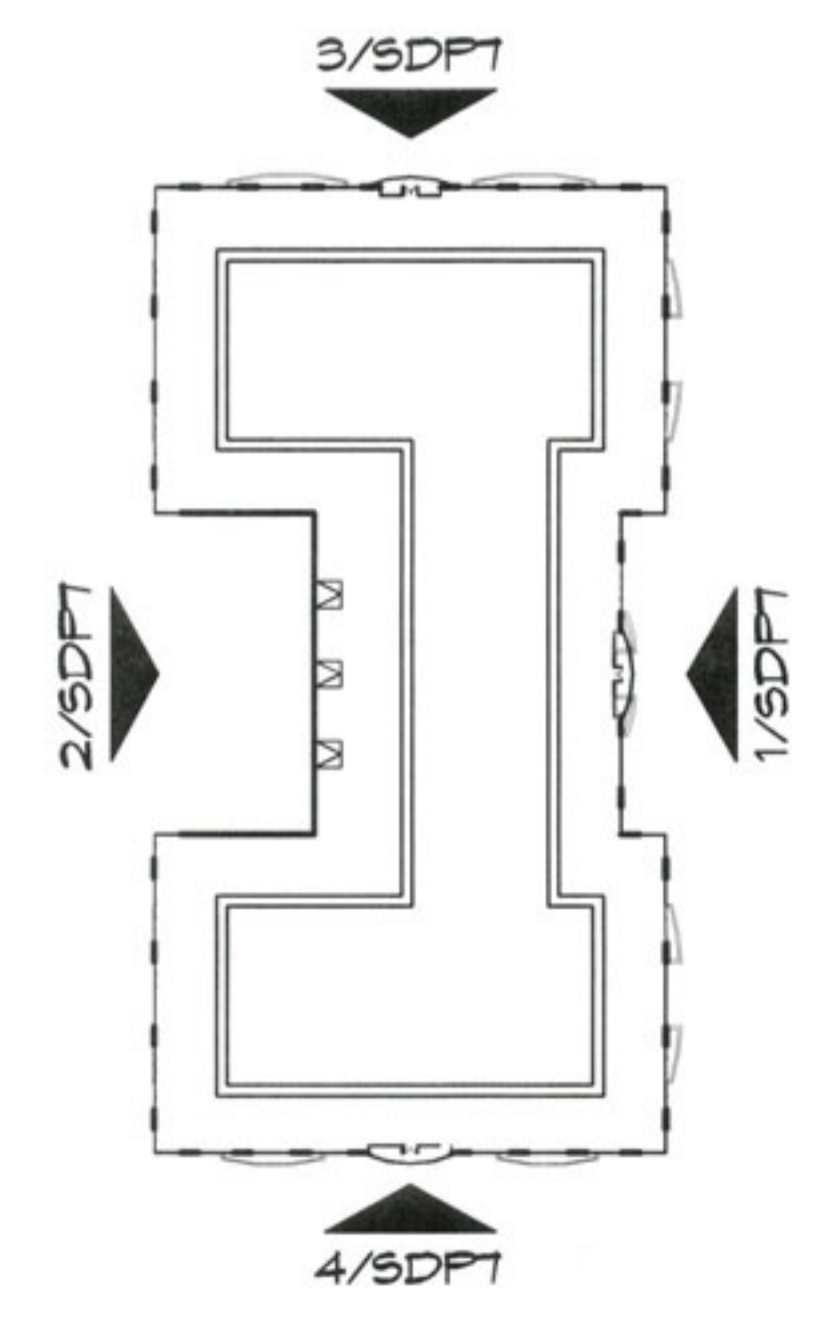
2 REAR ELEVATION
SCALE: 3/32" = 1'-0"



3 RIGHT ELEVATION
SCALE: 3/32" = 1'-0"



4 LEFT ELEVATION
SCALE: 3/32" = 1'-0"



KEY PLAN 'F'
NOT TO SCALE
PLAN NORTH

BUILDING TYPE 'F' BUILDING ELEVATIONS
SCALE: 3/32" = 1'-0"

ojala & company
www.ojalaco.com
FIFTY THREE NINETY FOUR MARSHALL STREET
SUITE FOUR HUNDRED, ARVADA, COLORADO 80002
TELEPHONE 303-420-5656

**MOUNTAIN WEST
BUSINESS CENTER**
5200 block thru 5400 block S. Alkire Street
Jefferson County, Colorado

COPYRIGHT
OJALA & COMPANY
THESE PLANS ARE AN INSTRUMENT OF
SERVICE AND ARE THE PROPERTY OF THE
ARCHITECT AND MAY NOT BE COPIED,
DISCLOSED, OR REPRODUCED WITHOUT THE
WRITTEN CONSENT OF THE ARCHITECT.
COPYRIGHTS AND INFRINGEMENTS WILL BE
ENFORCED AND PROSECUTED.

DATE: 03/13/07
DRAWN BY: S.R.B./P.D.L.
CHECKED BY:
JOB NUMBER:
ISSUE / REVISIONS:

ISSUE / REVISIONS:

ELEVATIONS

SDP-3